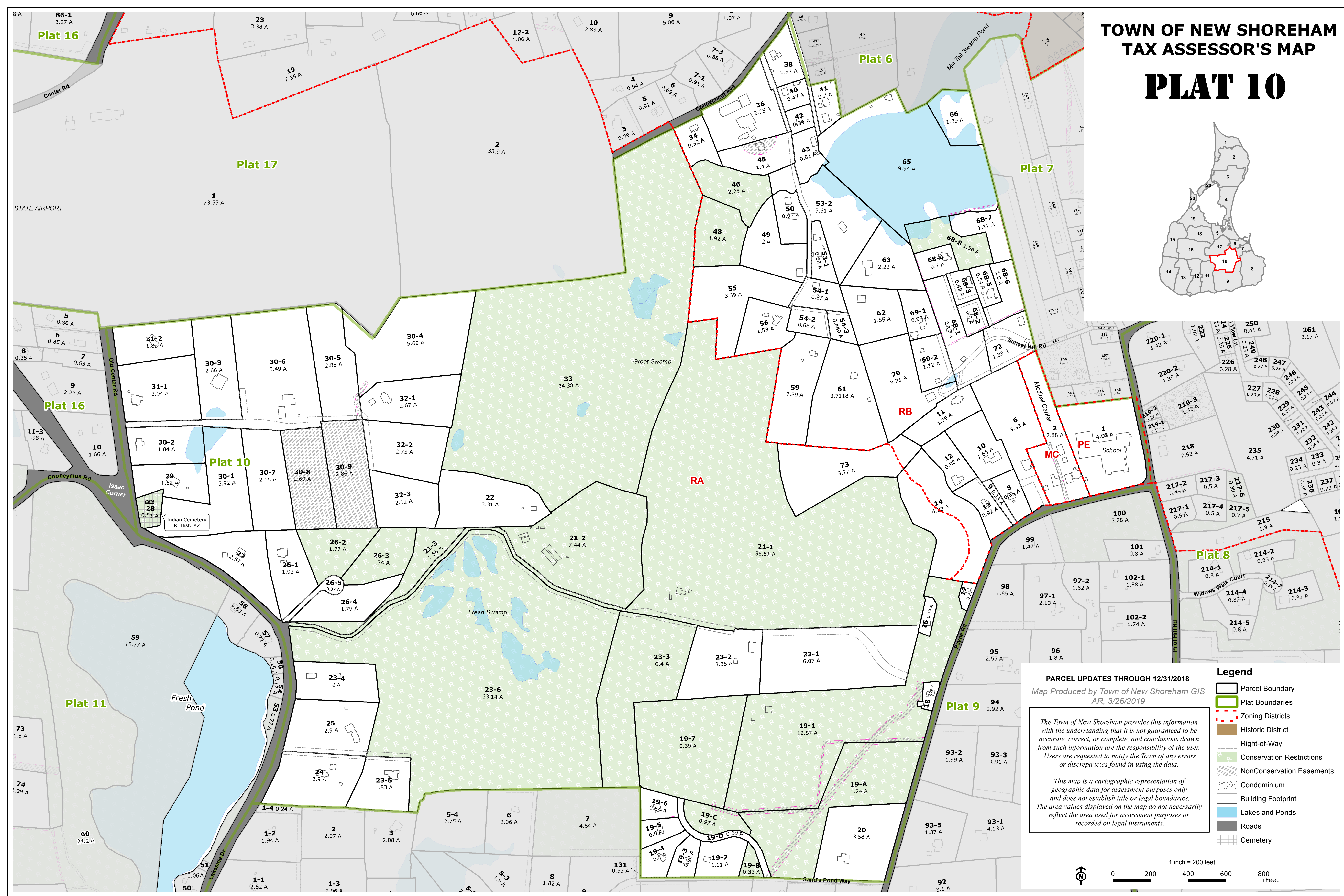
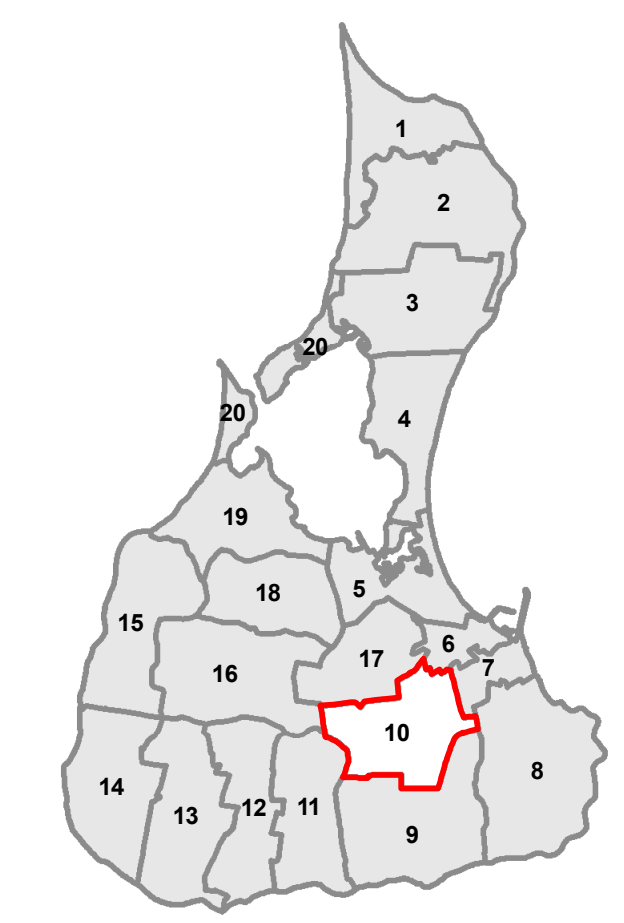


**TOWN OF NEW SHOREHAM  
TAX ASSESSOR'S MAP**

**PLAT 10**



**PARCEL UPDATES THROUGH 12/31/2018**  
 Map Produced by Town of New Shoreham GIS  
 AR, 3/26/2019

*The Town of New Shoreham provides this information with the understanding that it is not guaranteed to be accurate, correct, or complete, and conclusions drawn from such information are the responsibility of the user. Users are requested to notify the Town of any errors or discrepancies found in using the data.*

*This map is a cartographic representation of geographic data for assessment purposes only and does not establish title or legal boundaries. The area values displayed on the map do not necessarily reflect the area used for assessment purposes or recorded on legal instruments.*

**Legend**

- Parcel Boundary
- Plat Boundaries
- Zoning Districts
- Historic District
- Right-of-Way
- Conservation Restrictions
- NonConservation Easements
- Condominium
- Building Footprint
- Lakes and Ponds
- Roads
- Cemetery

1 inch = 200 feet

0 200 400 600 800 Feet