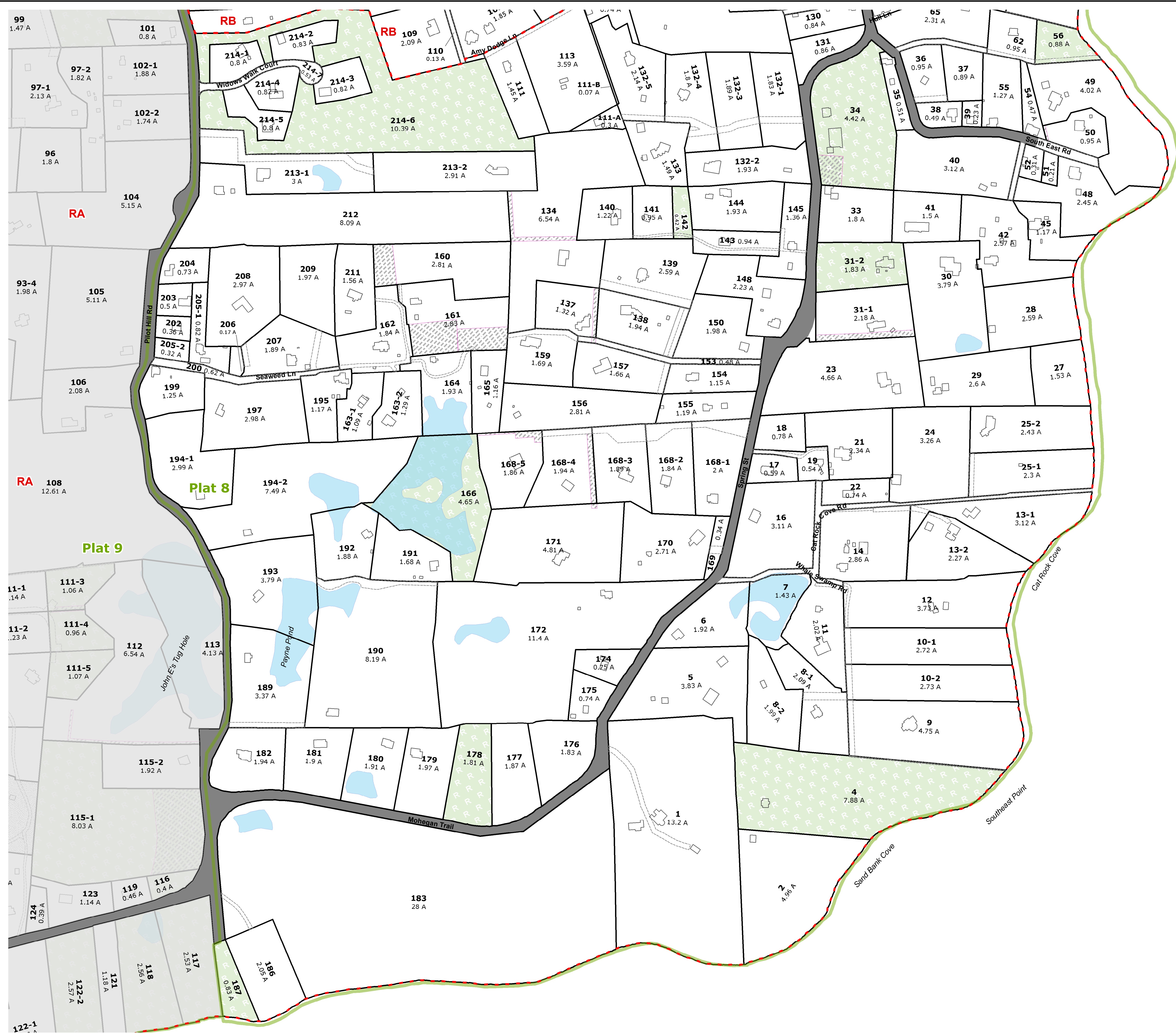
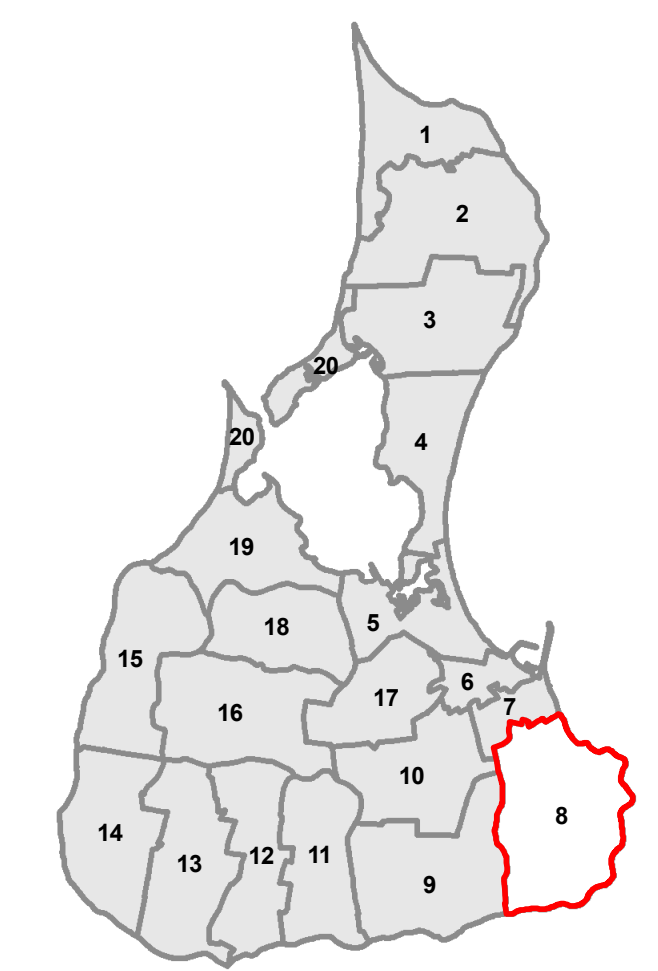


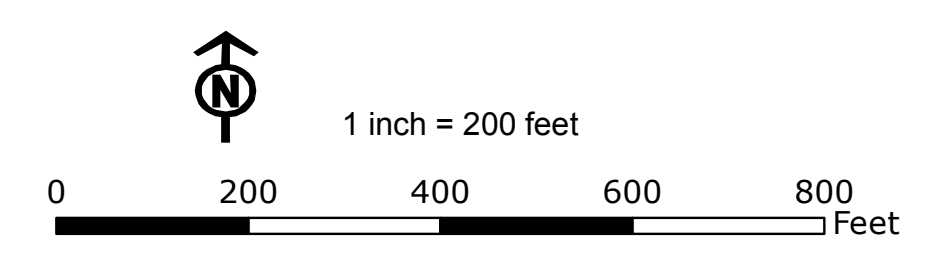
**TOWN OF NEW SHOREHAM
TAX ASSESSOR'S MAP**

**PLAT 8
MAP 2 - SOUTH**



- Legend**
- Parcel Boundary
 - Plat Boundaries
 - Zoning Districts
 - Historic District
 - Right-of-Way
 - Conservation Restrictions
 - NonConservation Easements
 - Condominium
 - Building Footprint
 - Lakes and Ponds
 - Roads
 - Cemetery

PARCEL UPDATES THROUGH 12/31/2018
Map Produced by Town of New Shoreham GIS
AR, 3/28/2019



The Town of New Shoreham provides this information with the understanding that it is not guaranteed to be accurate, correct, or complete, and conclusions drawn from such information are the responsibility of the user. Users are requested to notify the Town of any errors or discrepancies found in using the data.

This map is a cartographic representation of geographic data for assessment purposes only and does not establish title or legal boundaries. The area values displayed on the map do not necessarily reflect the area used for assessment purposes or recorded on legal instruments.